

NOVEMBER 2010 NEWSLETTER

It's that time of year again and before we know it the snow will be falling upon us. Many local meteorologists are predicting our annual snowfall will be anywhere between 85 – 100 inches of snow with most of it coming in February and March of 2011. The reason behind this they say is the temperature of the lake is still quite warm so we should be receiving the more abundant snowfall amounts later in the season.

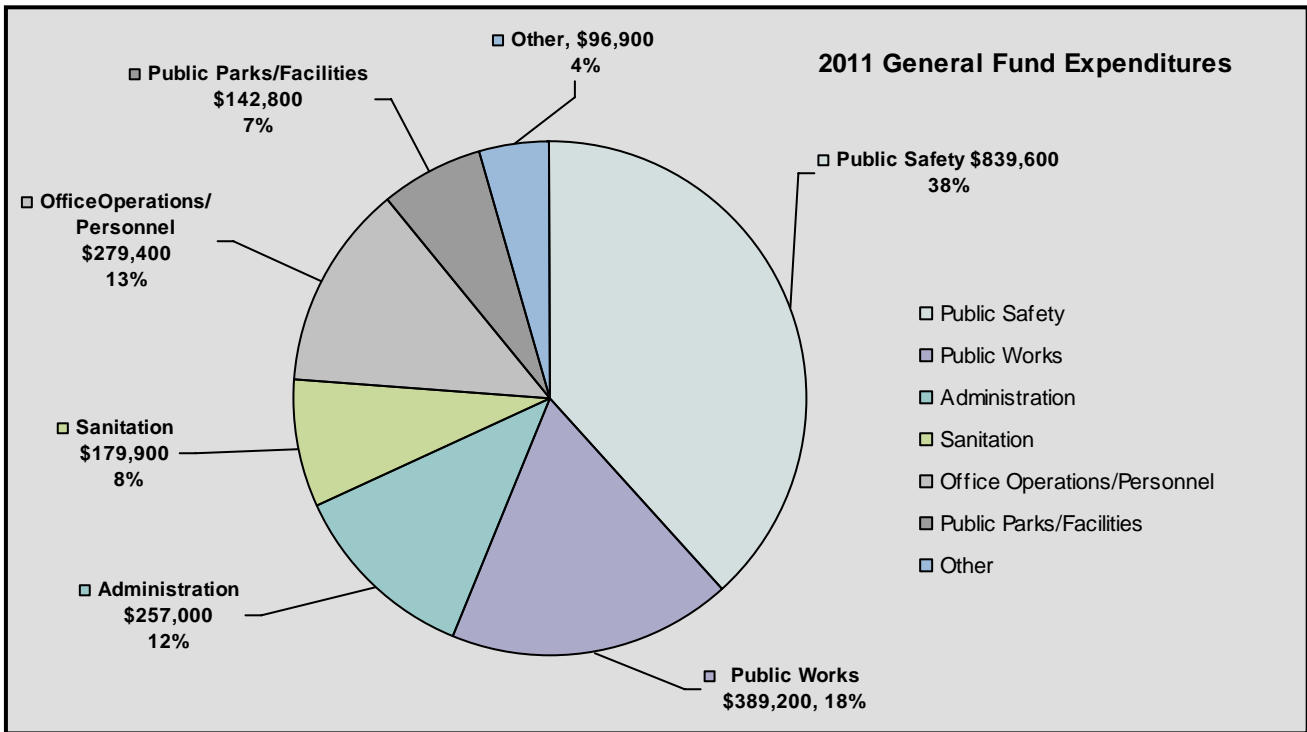
Regardless of when the first snowfall hits, the City's snow removal ordinance begins on December 1st every year that prohibits parking on any street or bike path from 2 a.m. until 6 a.m. during the period of December 1 through April 1 of each year. The snow removal ordinance states "No person shall stop, stand or park a vehicle on any improved, defined and marked parking lane or bike path" and "nor shall any person stop, stand, or park a vehicle on the terrace within three feet of any street or one foot of any sidewalk."

Once again the enforcement of the snow removal ordinance will begin on December 1, 2010 so please take this into account during the winter season.

The Michigan Vehicle Code, *Section 257.677a* prohibits the plowing or pushing of snow from private property into any public street or right-of-way. This ordinance will affect all homeowners and if you hire this service out then please inform your private snow plowing service of this ordinance. *Section 257.677a(4)* of the MI Vehicle Code states that "a person shall not deposit, or cause to be deposited, snow, ice or slush on any roadway or highway." Besides creating an immediate safety hazard, plowing or pushing snow into the public street will create problems with the city crews and their snowplowing duties. Most often the City can have all roads clear by the time our residents leave for work in the morning and we pride ourselves in having the ability to clear the sidewalks as well. Please be courteous to both the plow truck and sidewalk plow as they complete the routes and ensure safe travel for us all.

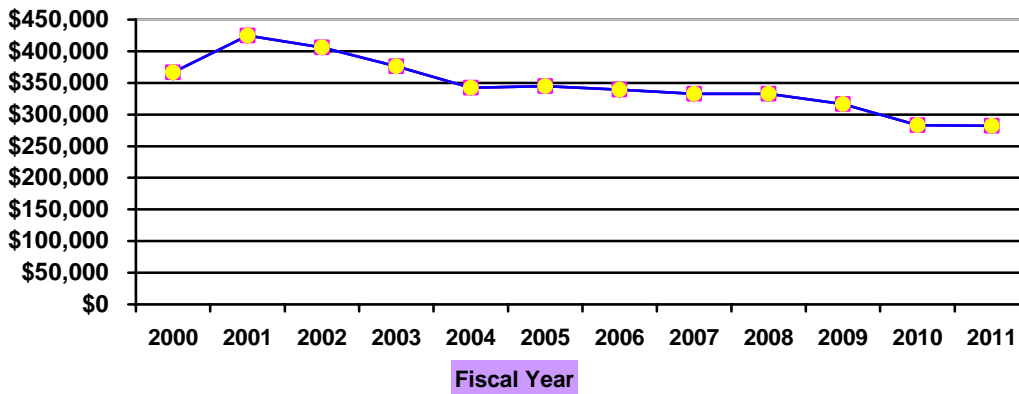
CITY BUDGET 2011

December 1st will mark the beginning of the new fiscal year and the outlook for 2011 looks to be more of the same. Local governments have been under extreme pressure the last few years as revenues across the board decline and the costs to provide services continue to rise. This dilemma has put local officials in a difficult position as public budgeting is severely strained and every dollar is heavily scrutinized as we look to provide the most return with all expenditures. The general fund is the largest fund within the city and accounts for most of the financial resources. The general fund includes the basic operating services such as police and public works in addition to general administration. For 2011, the total general fund revenue is expected to be \$2,236,929 which is \$44,471 less than 2010 and expenditures for 2011 are anticipated to be \$2,185,800 which is a decline of \$95,600 from 2010. This reduction means that the City is doing more, or at least the same with less as no cuts in services are expected. Below is a graph that depicts the 2011 general fund expenditure amounts per department.



One small bright spot in budgeting news is that our share of State revenue, which serves as the City's second largest source of revenue behind property tax is expected to be roughly the same as last year and by doing so will end a multi-year downward slide as indicated in the chart below.

Roosevelt Park Revenue Sharing Amount



HEAVY ITEMS REQUIRE A GREEN TAG

It is understood from time to time you may have a heavy/bulk item or two that you would like to dispose of and so you set it out to the curb and hope that it just disappears. RMS does not pickup any item that is not in the blue bin so if you need to dispose of a heavy item then you must acquire a green tag from City Hall. The City allows two green tags per single family household each year at no charge. The City provides this service so the residents have an option for removing unwanted bulky items that are too large for the blue 95 gallon RMS containers. Of course no hazardous materials are accepted and all appliances really should be recycled. Did you know that Goodwill now accepts old television and computer monitors for recycling and most major retailers will take your old appliance for a small fee? Anything we pick up simply goes to the landfill so please try and recycle if at all possible. The DPW will typically pick up heavy/bulk items on Tuesday afternoon or Wednesday morning of each week. It is highly recommended that you place the tagged items out on the terrace the day before your scheduled garbage day (Tuesday).

OFFICIAL CITY WEBSITE

The City does have an official website www.rooseveltpark.org that includes up to date information regarding the City. You can view information on the City council including the official minutes of every meeting and other important documents such as the annual budget. The calendar is updated to inform you about upcoming meetings and events so check us out online. You can also keep in touch with what is happening in the City through our Facebook page.

POST ROAD COMPLETION

Road improvements are always a top concern and this year road maintenance made it to the top of the City Council goal list for 2011. Although funding for major road repair is scarce the City was able to obtain a grant from the State for \$87,400 to assist with funding the Post Road project that was completed in late September. The project was a success and the new road surface is much improved with the installation of storm sewers.

STREETLIGHTS – POWER OUTAGES

The streetlights throughout the City's neighborhoods and along the major streets such as Henry and Norton are all owned and operated by **Consumers Energy**. The City has no control over the maintenance of these lights so if you see a light that is out or is not working properly then you need to contact **Consumers Energy**. The best way to reach them is by e-mail at customer@consumersenergy.com or you can call them at **1-800-477-5050**. Contacting the City will not fix the problem and the time spent calling City Hall will only delay you further. Please contact **Consumers Energy** direct for any assistance regarding streetlights or power outages.

CITY BOARDS AND COMMISSIONS

There are vacancies on the many boards and commissions that conduct business on behalf of the residents and business community of Roosevelt Park. These boards and commissions are authorized or empowered by State statute or City Charter and include

the Downtown Development Authority, Planning Commission, Zoning Board of Appeals, Construction Board of Appeals and Board of Review. If you are interested in serving your community on anyone of these bodies then please call or visit us at City Hall and request an application.

CITY HALL WILL BE CLOSED

CHRISTMAS

Thursday, December 23, 2010

Friday, December 24, 2010

NEW YEARS

Friday, December 31, 2010

Monday, January 3, 2011

Happy Holidays!!!! Have a safe and wonderful holiday season.

City of Roosevelt Park Council Members and Staff

Rodney A. Buikema, Mayor
1539 Chapel Rd.
755-1839
Buik1m@verizon.net

Laura Fitzpatrick
1466 Greenwich Rd.
755-2397

Eric Grimm
1330 W. Summit Ave.
(734) 717-4900

Thomas C. Hasper
1346 W. Norton Ave.
780-1147

Bob Young
3032 Roosevelt Rd.
853-6458

Bob Grevious
3243 Royal Oak Rd.
329-4882

Susan M. Lumley
1362 W. Norton Ave.
780-2300

| | | |
|-----------------|--------------------|-------------------|
| David Boehm | City Manager | 755-3721, ext 105 |
| Tammera Harmsen | Treasurer/Clerk | 755-3721, ext 104 |
| Bill Regan | Chief of Police | 755-3721, ext 114 |
| Tim Villanueva | Building Inspector | 755-3721, ext 109 |

**CITY HALL OFFICE HOURS: 8:30 a.m. – 5:00 p.m.
Phone 755-3721 or Fax 755-1442**